

BTRE Statistical Collections:

AGSF, 1 November 2006

Andy Turner

General Manager

Regional Research & Statistics

Bureau of Transport & Regional Economics (BTRE)

Department of Transport & Regional Services (DOTARS)

Tel: 02-6274 7818;

Andy.Turner@dotars.gov.au

www.dotars.gov.au

www.btre.gov.au



Structure

1. THE BTRE
2. TRANSPORT STATISTICAL COLLECTIONS IN BTRE
3. THE BTRE REGIONAL RESEARCH PROGRAM
4. CONCLUDING REMARKS

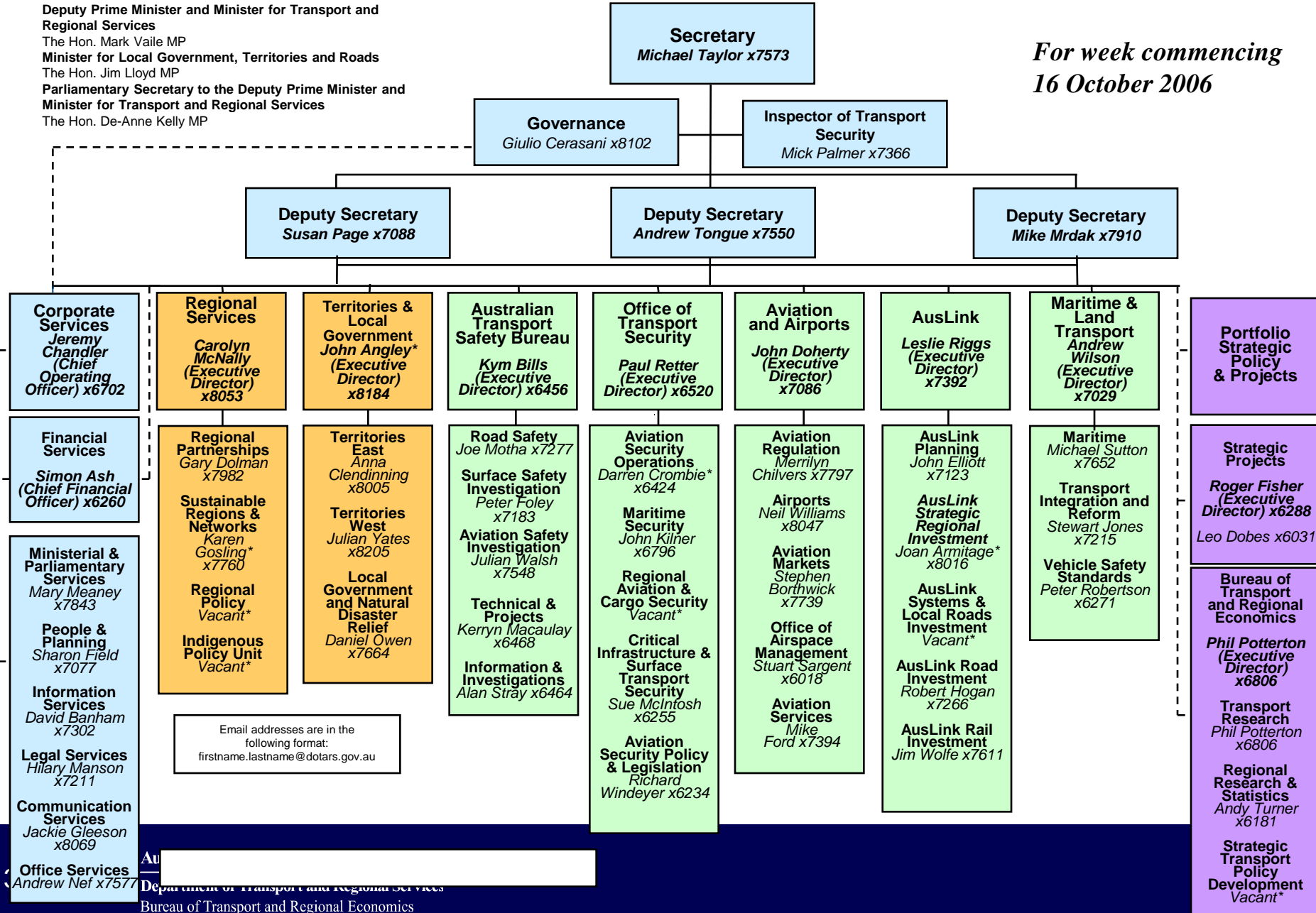




Organisational Structure

Deputy Prime Minister and Minister for Transport and Regional Services
The Hon. Mark Vaile MP
Minister for Local Government, Territories and Roads
The Hon. Jim Lloyd MP
Parliamentary Secretary to the Deputy Prime Minister and Minister for Transport and Regional Services
The Hon. De-Anne Kelly MP

*For week commencing
16 October 2006*



Email addresses are in the following format:
firstname.lastname@dotars.gov.au

The Bureau of Transport and Regional Economics (BTRE)

About 55 staff in 3 Branches and one Unit:

- Transport Research Branch (Phil Potterton)
- Strategic Transport Policy Development Branch (Anthony Ockwell*)
- Regional Research & Statistics Branch (Andy Turner)
- Publications Unit

* Consultant



Statistical collections in DOTARS

- Statistical collections within DOTARS but outside BTRE:
 - Eg transport safety;
 - local government;
 - National Regional Evaluation Framework (NREF)

Structure

1. THE BTRE
2. TRANSPORT STATISTICAL COLLECTIONS IN BTRE
3. THE BTRE REGIONAL RESEARCH PROGRAM
4. CONCLUDING REMARKS



Transport statistics:

- Aviation statistics;
- Maritime and Land Transport (MALT) statistics:
 - maritime;
 - road;
 - rail;
- Products:
 - **Publications** (internet/hard copy);
 - Data-bases



Aviation statistics - 1

- **Monthly/quarterly/annual publications:**
 - International Scheduled Air Transport;
 - International Scheduled Air Transport – Operated Seats;
 - Australian Domestic Airline Activity;
 - Airline On Time Performance (domestic);
 - General Aviation Survey;
 - Airport Traffic;
 - Digest of Statistics;
 - Avline;
 - Australian Transport Statistics;



Aviation statistics – 2

Other work:

- Domestic Airfares Indexes;
- International Origin/Destination Data;
- Australian International Air Traffic Summary.



MALT statistics - 1

- **Current publications:**
 - Australian Sea Freight;
 - Waterline:
 - *landside port productivity indicators;*
 - International Cargo Statistics Update;
 - Australian Transport Statistics;
 - Public Road Related Expenditure;
 - Road Construction and Maintenance Price Index;



MALT statistics - 2

- Pending new publications:
 - Rail Freight Performance (for Aus Transport Council);
 - Road Freight (details to be resolved).

Structure

1. THE BTRE
2. TRANSPORT STATISTICAL COLLECTIONS IN BTRE
3. THE BTRE REGIONAL RESEARCH PROGRAM
4. CONCLUDING REMARKS

Main Steps in Development of Australian Government's Regional Policy Framework:

- 1999: Regional Australia Summit
- 2001: *Stronger Regions: A Stronger Australia*
- 2002: Review of Regional Programs



International Trends: OECD Approaches

- **place-based**
- **partnerships**
- **whole-of-government**

BTRE regional research

- **Regional research introduced in 2002**
- **Small team of 8 researchers**
- **We:**
 - **Undertake research & publish reports**
 - **Advise on research-related issues**
 - **Build & maintain networks**
 - **Organise conferences & other events**

BTRE regional publications

- **About Australia's Regions**
- **Government interventions in pursuit of regional development**
- **Investment trends in the Lower Murray Darling Basin (*)**
- **Regional public transport**
- **Skill shortages in Australia's regions**
- **Drivers of growth in the Greater Sydney Metropolitan Region (*)**
- ***Focus on Regions series***

Focus on Regions (*and geographies*)

1. **Industry structure** (*SLAs & BTRE Labour Market Regions*)
2. **Education, skills and qualifications** (*SLAs & LMRs*)
3. **Taxable income** (*SLAs, LGAs & LMRs*)
4. **Social capital** (*69 BTRE-defined regions, aggregated SDs/ SSDs*)
5. **Welfare dependency** (*incl SLAs, LMRs*)
6. **Household wealth** (*incl SLAs, SSDs*)

New directions

- **Analysis of regional economic status/change:**
 - strengthening research-policy-stakeholder (eg Area Consultative Committee) linkages
- **Building on existing studies:**
 - Lower Murray Darling & GSMR;
- **Developing new projects:**
 - Tasmania's Economic Development, 1985-2005;
 - Cost of remoteness
 - Sponge cities

Structure

1. THE BTRE
2. TRANSPORT STATISTICAL COLLECTIONS IN BTRE
3. THE BTRE REGIONAL RESEARCH PROGRAM
4. CONCLUDING REMARKS



Concluding remarks

- Some issues:
 - Research driven policy, **or** policy driven research?
 - Information for research projects, **or** time-series data collections?
 - Regional statistics: whole-of-government, **or** hole in government?



Questions?

BTRE Statistical Collections

Andy Turner

General Manager

Regional Research & Statistics

Bureau of Transport & Regional Economics (BTRE)

Department of Transport & Regional Services (DOTARS)

Tel: 02-6274 7818;

Andy.Turner@dotars.gov.au

www.dotars.gov.au

www.btre.gov.au

